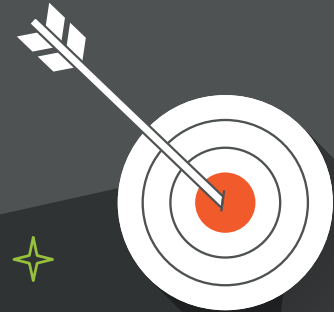


Growth, Benefits and Value

2023 INSIGHT INTO TODAY'S CCM CERTIFICANT



Commission for Case Manager Certification



WHO

is today's CCM certificant?



Board-certified case managers—the over 50,000 professionals who hold the Certified Case Manager credential—work in settings across the health care continuum. In many organizations with clients who need navigation, care coordination, and access to resources to optimize health, you'll find a board-certified case manager.¹

¹ Unless otherwise noted, data in this eBook is from 5,446 responses to the survey, "Health2 Resources and CCMC, Professional and Demographic Characteristics of CCMs" November 2022.

WHO is today's CCM certificant?

Top current employment settings:

- 26% Health plan/insurance disability company
- 19% Hospital/acute care
- 10% Workers' comp
- 8% Ambulatory/outpatient/primary/urgent care

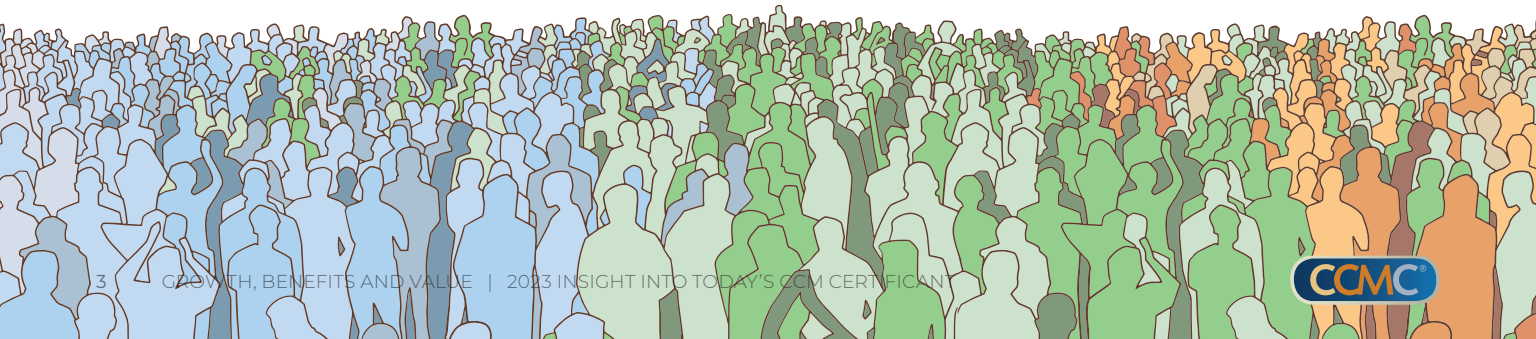
96%
are women

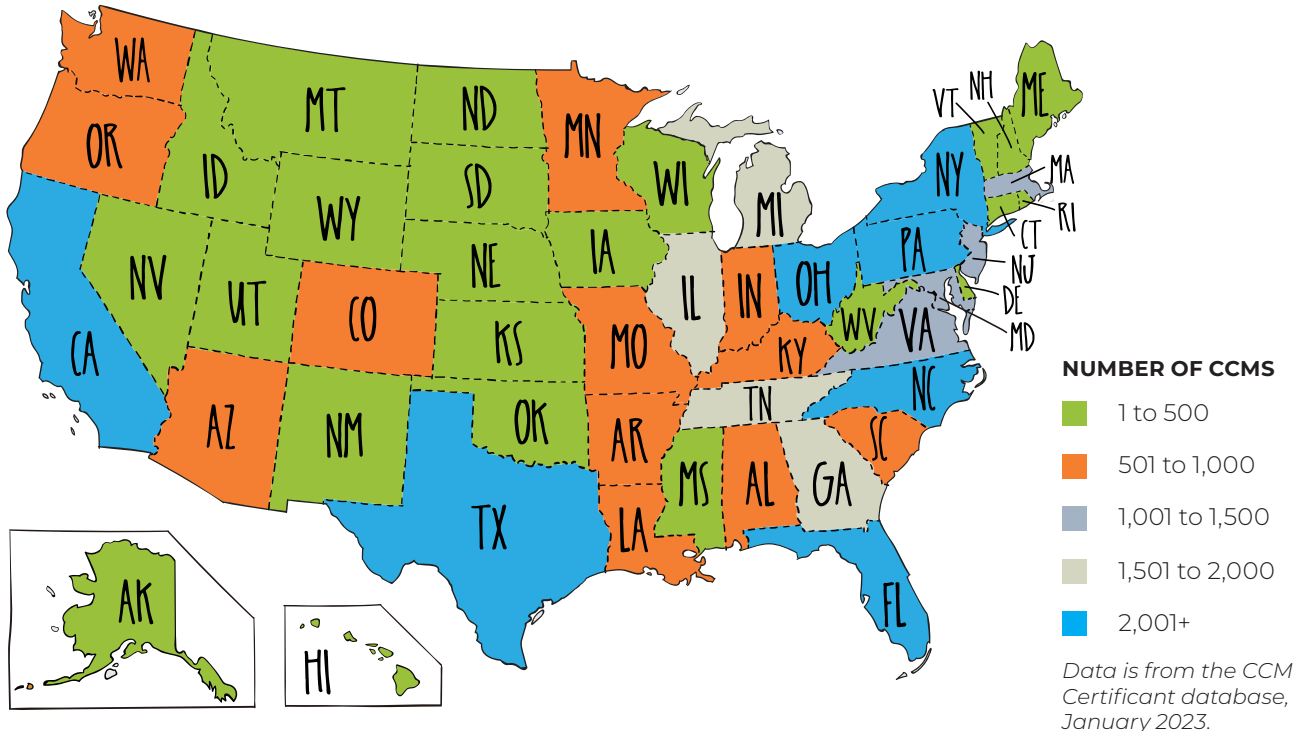
80%
have bachelor's
degree or higher, with
this figure increasing

Work in **all**
U.S. states

Certified for an average of
10 years,
with an average of 7 years of
work prior to certification

24%
are in executive or
management roles





WHERE do they live and work?

CCM certificants are in all 50 states and Washington, D.C.

CCM certificant are seasoned professionals.



60% of CCMs have been in case management for **10 or more years.**

Professional Background:

86%
RN

9%
Social worker

5%
Other



CCM certificant go the **extra mile** to gain expertise to serve their clients.

In addition to experience, education, and the distinction of earning the CCM, nearly all board-certified case managers bring value to employers through specialty expertise.

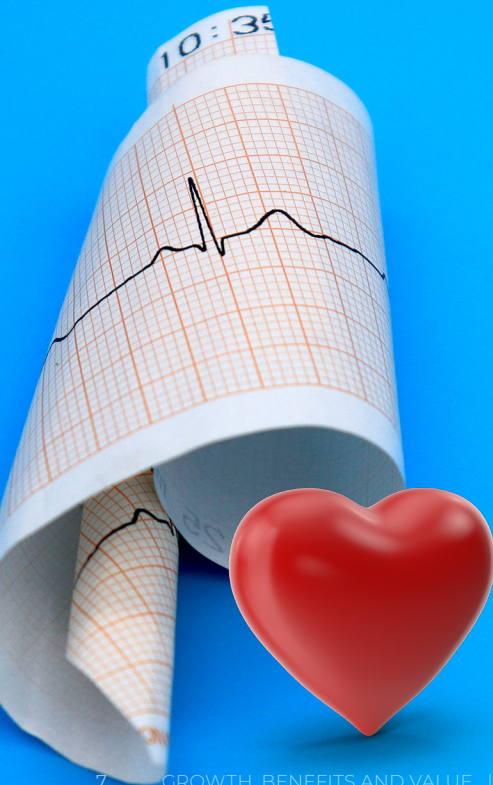
95%

of CCMs have specialty experience in one or more areas.

N=5,197



The case manager is focused on quality and patient empowerment, but also on coordination among different providers, advocating, and helping patients navigate the health system.



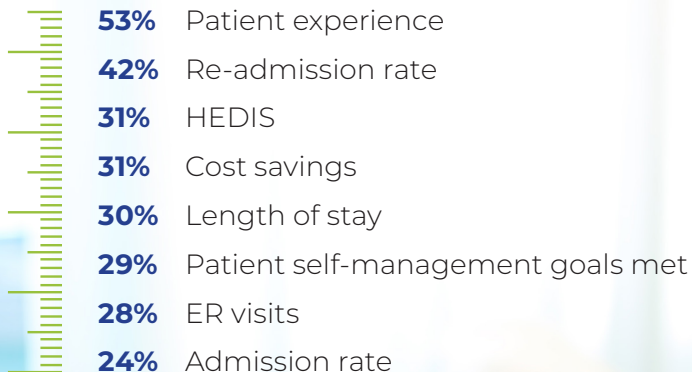
CCM certificant say the aspects of their job that are **most vital** are:

- Ensuring appropriate care
- Educating and empowering clients
- Advocacy
- Coordinating care
- Helping to increase access to care
- Helping identify issues

N=4,789

Measuring care coordination is important.

92% of board-certified case managers say their organization tracks care coordination activities, some using multiple measures.



N=4,993



**\$90k-
\$100k**

The median salary
of CCM certificants



77%

are earning
\$80k+



36%

are earning
\$100k+



75%
of CCM
certificants

have received a
salary increase in
the last 12 months

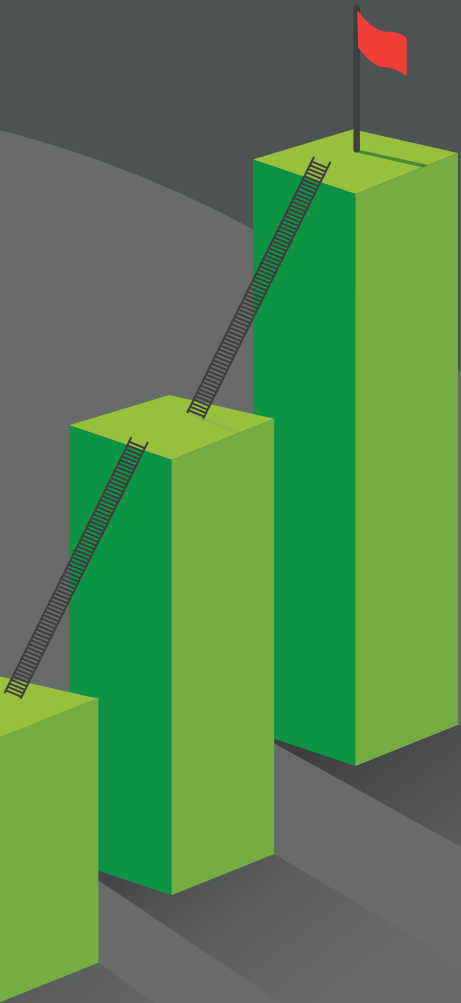
SALARIES

for CCM certificants are
on the rise.

A large majority of CCMs earn
more than \$80k per year,
and more than one-third of CCMs earn over \$100k.

N=4,321





The CCM is

a rewarded
professional
milestone.

The most important reason case managers pursue certification is to improve employment options, to enhance professional standing, to build knowledge, and for personal growth.

Benefits of CCM Certification

extend beyond salary alone.



86%

of case managers
report certification has
had a positive impact
on their career.

N=4,794

Employers recognize the value

of CCM certification and financially support ongoing professional development.

CCMs who supervise other case managers recognize the value of the credential when hiring—and so do their employers.

74%

of employers prefer or require certification for case managers.

N=1,030



CCM certificants who are supervisors develop others by setting them on the path to certification.

91% of CCMs have recommended the CCM to others.
N=4,794

CCM supervisors are highly aware of the Commission's resources for lifelong learning and professional development.

81% know about CCMC's Case Management Body of Knowledge (CMBOK®) online learning platform
N=1,012

69% know about CCMC's Pre-Approved Continuing Education (PACE™) Program
N=1,030



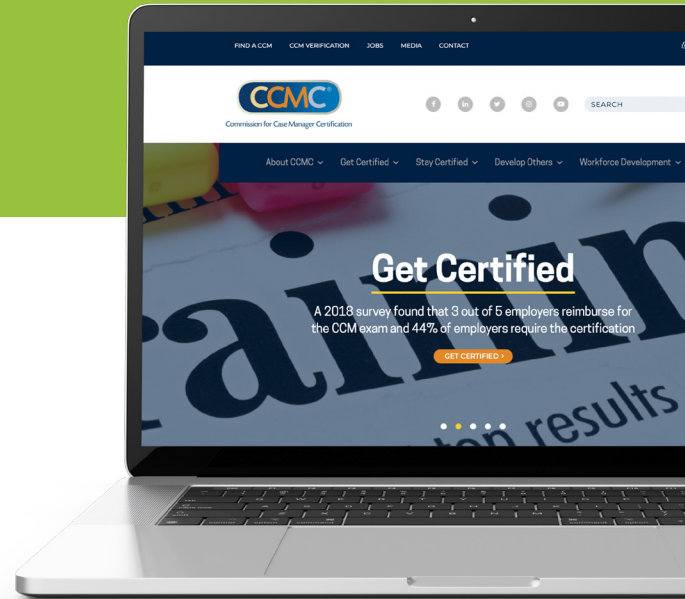
The benefits of board-certification are clear for case managers, health care organizations, and the clients they serve.

How can the CCM certification help you and your organization develop others?



GET CERTIFIED. STAY CERTIFIED. DEVELOP OTHERS.

Find out more at ccmcertification.org,
or call us at (856) 380-6836.



Written and produced by Health2Resources.
Created January 25, 2023

1120 Route 73 | Suite 200
Mount Laurel, NJ 08054